

ORDINANCE NO. 011-321-1

**AN ORDINANCE ADOPTING A REPLACEMENT ORIGINAL OFFICIAL ZONING MAP FOR THE VILLAGE OF TIMBERLANE**

**WHEREAS**, the Village of Timberlane on August 18, 2005 adopted Ordinance O05-230-1 and,

**WHEREAS**, Ordinance O05-230-1 established the Village Zoning Ordinance and further adopted by reference the Original Official Zoning Map pursuant to Chapter 1, Section 1.6 of the Village of Timberlane Zoning Ordinance and,

**WHEREAS**, it has been discovered that all requirements in the construction of said Original Official Zoning Map had not been met and,

**WHEREAS**, it is in the best interest of the Village and in compliance with State Law to correct the Original Official Zoning Map pursuant to the remedy indicated in Chapter 1, Section 1.6 (D) of the adopted Village Zoning Ordinance.

**NOW THEREFORE, BE IT ORDAINED** by the President and the Board of Trustees of the Village of Timberlane, Boone County, Illinois that:

**Section 1.** The President and Village Board of Trustees hereby adopts a Replacement Original Official Zoning Map as permitted and in conformance with the requirements of Chapter 1, Section 1.6 (D) of the adopted Village of Timberlane Zoning Ordinance.

**Section 2.** This Ordinance shall be in full force and effect from and after its passage and approval as provided by law.

Adopted by the Board of Trustees of the Village of Timberlane, Illinois this 17 day of NOV, 2011.

Approved by me this 17 day of November, 2011.

Stephen M. Rapp  
Stephen M. Rapp, Village President

Attest:

Debra K. Marner  
Debra K. Marner, Village Clerk

Trustees Voting:

Aye: 4

Nay: \_\_\_\_\_

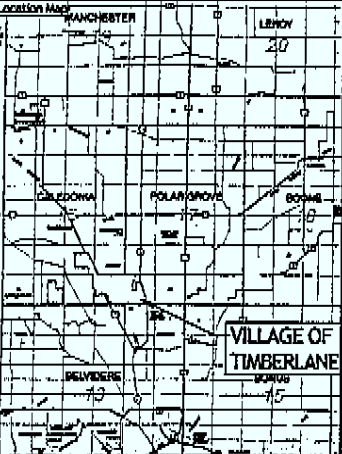
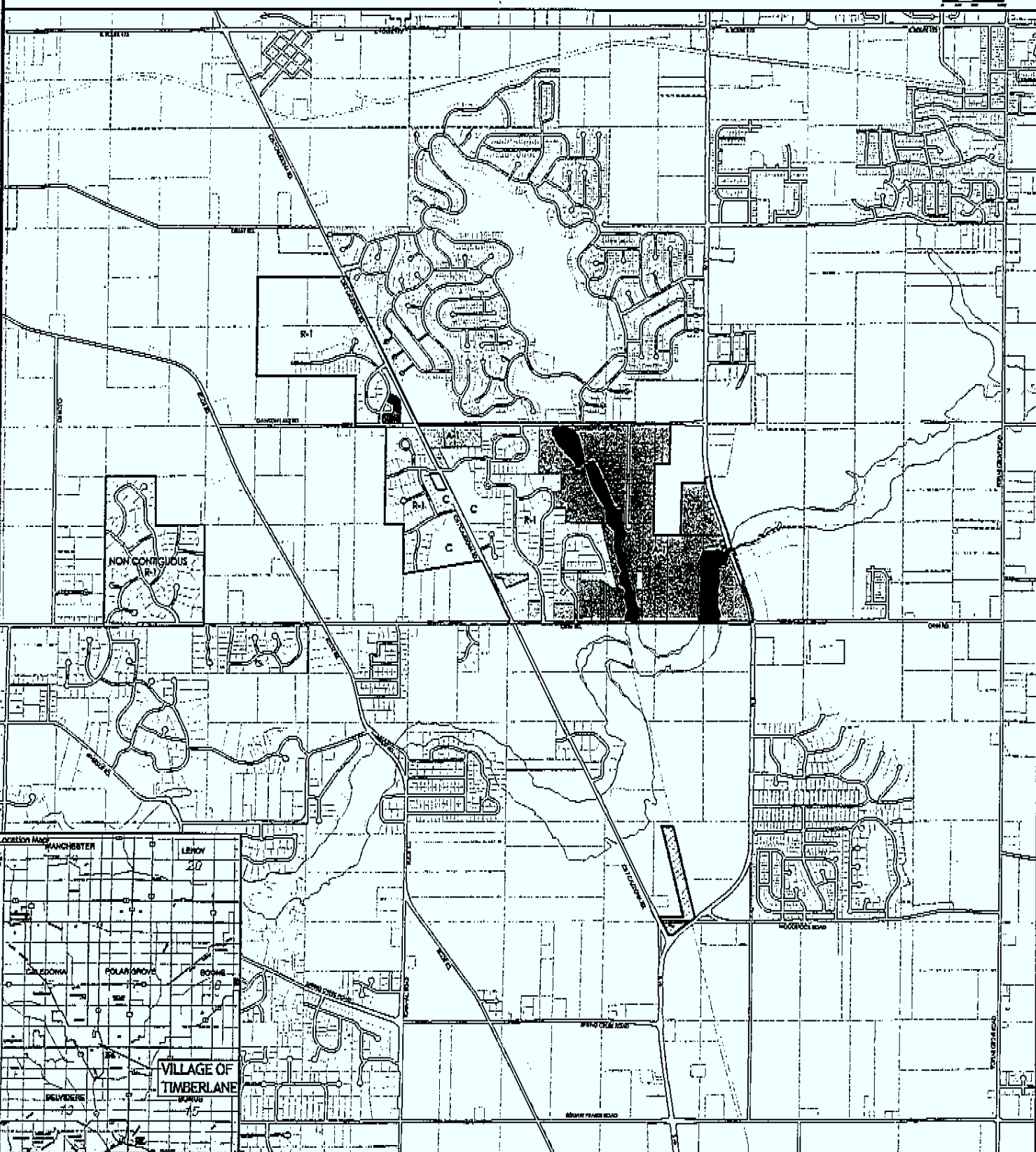
Absent: 1

**FILED**

DEC - 1 2011

Mary S. Steiner  
BOONE COUNTY CLERK

# VILLAGE OF TIMBERLANE OFFICIAL ZONING MAP



	SR Single-Family Residential District		LI Light Industrial District
	SR1 Single-Family Residential Center		OI Office Industrial District
	RF Two-Family Residential District		CP Community and Public District
	MF Multi-Family Residential District		AD Airport District
	CO Commercial Office		UI Urban Industrial
	CR Retail and Service Commercial District		PC Parkway Center
	CG General Commercial District		PUD Planned Unit Development District
	CH Highway Commercial District		NC Non-Contiguous
	Municipal Boundary		Future 2040 Municipality Boundary
	Village Boundary		2040 Municipality Boundary

REVISIONS:	
Original	01/17/11

This is To County Plan This is an Original Official Zoning Map Pursuant to CHAPTER 1, Article 1A of The Village of Timberlane Zoning Ordinance. This is a COPY that is the Original Official Zoning Map prepared by the Village of Timberlane. It is not to be used for any other purpose.

Prepared by: CES

Approved by: Village President

Approved by: Village Clerk

Date Adopted: \_\_\_\_\_



TIMBERLANE, ILLINOIS  
Established in 1999