

ORDINANCE 008-052-01

**ORDINANCE REVISING A ZONING MAP,
VILLAGE OF TIMBERLANE, BOONE COUNTY, ILLINOIS**

An Ordinance revising the zoning map for the Village of Timberlane.

BE IT ORDAINED by the President and the Board of Trustees of the Village of Timberlane, Boone County, Illinois:

Section 1:

See attached zoning map.

Section 2:

This Ordinance shall be in full force and effect from and after its passage and approval as provided by law.

Adopted by the Village of Timberlane Board this 21ST day of February, 2008, pursuant to a roll call vote of the Board of Trustees of the Village of Timberlane, Illinois, as follows:

Stephen M Rapp, Village President

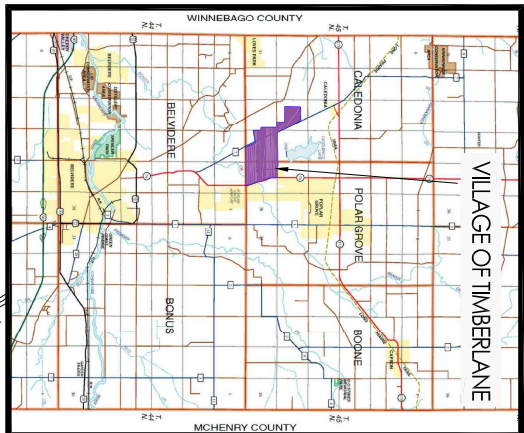
Debra K Marner, Village Clerk

Ayes: 6

Nays: 0

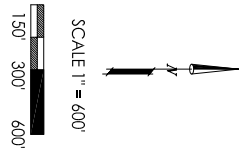
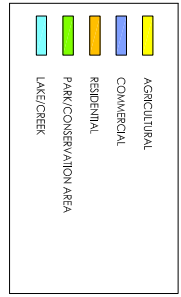
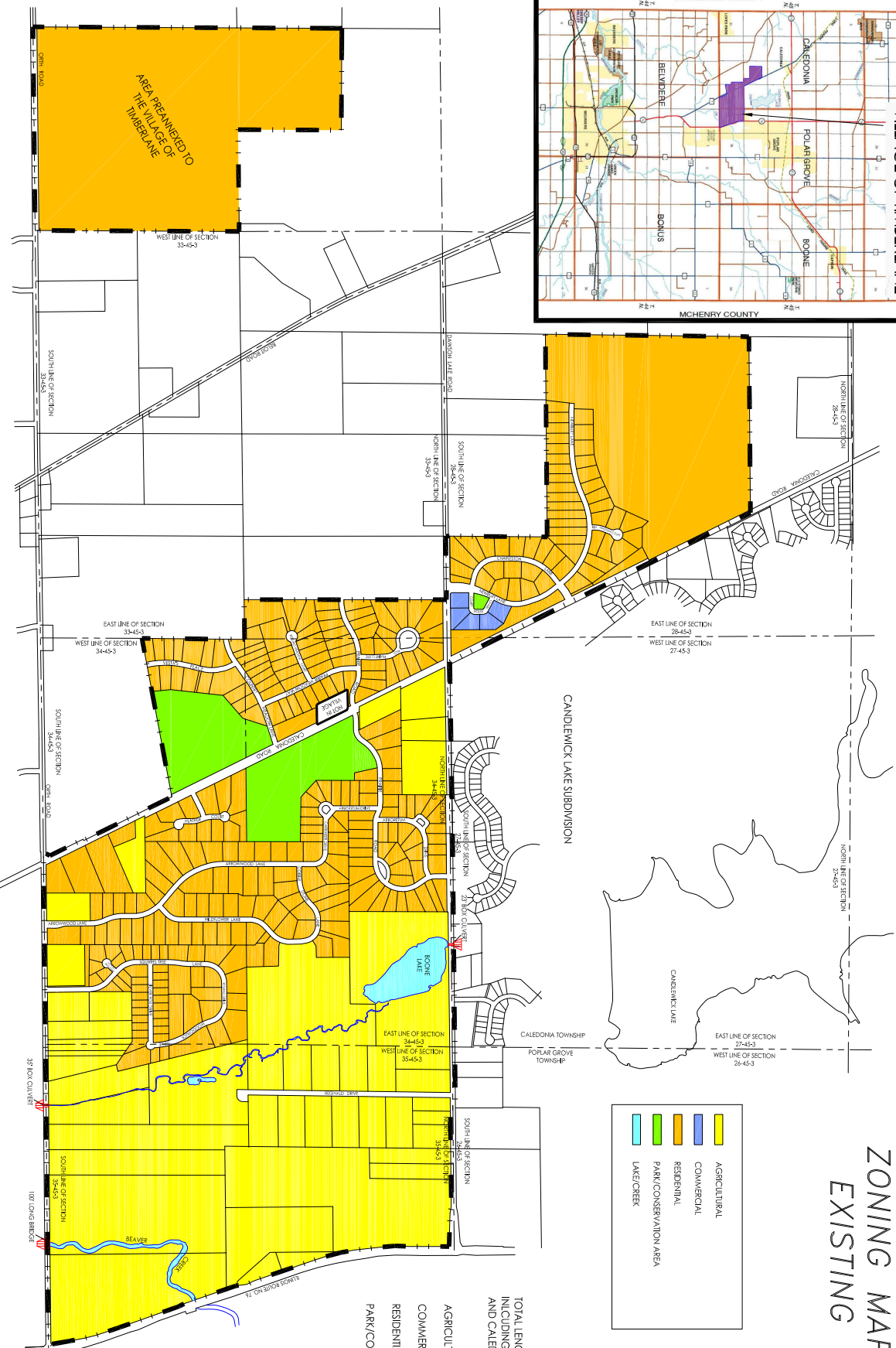
Absent: 0

LOCATION MAP



VILLAGE OF TIMBERLANE, ILLINOIS

ZONING MAP EXISTING



TOTAL LENGTH OF ROAD = 35,589 FEET (NOT INCLUDING DAWSON LAKE ROAD, ORTH ROAD AND CALEDONIA ROAD)

AGRICULTURAL = 39.00%

COMMERCIAL = 0.43%

RESIDENTIAL = 55.64%

PARK/CONSERVATION AREA = 4.92%

AREA PREPARED TO THE VILLAGE OF TIMBERLANE



PROJECT NO.	DATE	BY	CHKD.
1702_ZONINGMAP.DWG	08/20/2018	DAVID W. DAVIS	DAVID W. DAVIS
PROJECT: VILLAGE OF TIMBERLANE MAP 01 SHEET 1 OF 1			